

FRIEZE MASTERS

DANIEL BLAU

LEROY PAINTINGS • PACIFIC ISLAND POUNDERS

Daniel Blau is delighted to participate once more in the "Collections" section, curated by Sir Norman Rosenthal. This year's selection promises a stunning juxtaposition of paintings by Eugène Leroy and poi (taro) pounders from the Pacific.

Eugène Leroy (1910 - 2000) was a French painter whose works were typically made over many years, where paint was gradually applied to the canvas to create these magnificently thick, expressive surfaces. His paintings show his life-long preoccupation with light - how light is captured not only through colour, but through layers of paint. His contemplation of light and form shows itself most when we closely examine the paintings. Leroy's thick surfaces are the results of his painterly quest to investigate light. Areas he was satisfied with were left 'thinner' than those he needed to develop, add, layer until his desired result was obtained. His subjects, often nudes, become almost indistinguishable amidst the material density created. Though he remained largely unrecognised until the 1980s, he was awarded the *Grand Prix Nationale de la Peinture* in 1996 and his paintings are held in numerous public collections. We will show a range of works from the 1960s to 1990s.

Poi pounders, or *Penu* in Tahitian, are characterised by their beautiful, pure and essential form. They are used for pounding cooked taro root (*kalo*) into poi, a main staple of the traditional Pacific, mostly Polynesian diet. Taro root was steamed in an imu (earth oven), peeled with a shell scraper, and placed on a wooden pounding board to be mashed with the stone poulder. Most have been skilfully crafted from fine basalt or coral rock and sometimes show elaboration and embellishments on their handles such as carvings of humans and animals. The exquisite selection of 15 - 20 pounders we will exhibit at this year's Frieze Masters has been collected over the last 30 years. They are magnificent examples of how *form follows function*.

The poi pounders are as equally utilitarian as they are evocative and sculptural.

Frieze Masters
Stand H2

Regent's Park
NWI 4HA, London
UK

Please access the fair
from the Outer Circle on
Gloucester Gate

Collectors' Preview
Wed. October 5th
(invitation only)

Exhibition
Thurs. 6th - Sun. 9th
October 2016

For further information
or sales enquiries please
email:
contact@danielblau.com

Daniel Blau
Maximilianstr. 26
80539 München
Tel. +49 (0)89 - 29 73 42

www.danielblau.com



A group of poi (taro) pounders made from basalt by Polynesian people in the Pacific.

Sizes vary between 5 - 20 cm

Tahiti, Austral Islands, and Marquesas

Courtesy of Daniel Blau Munich



A group of poi (taro) pounders made from basalt by Polynesian people in the Pacific.

Sizes vary between 5 - 20 cm

Tahiti, Austral Islands and Marquesas

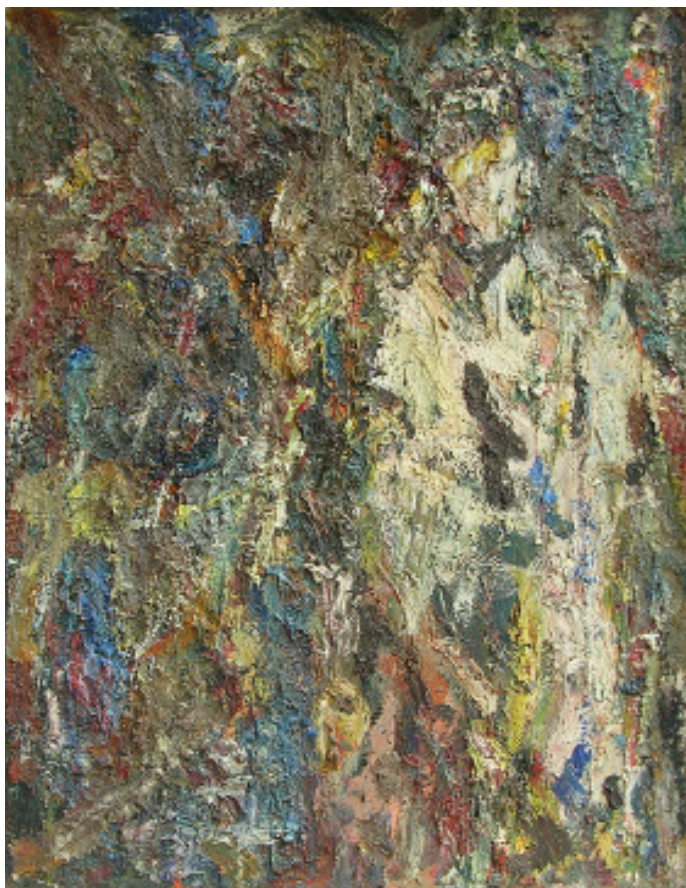
Courtesy of Daniel Blau Munich



Eugène Leroy (1910 - 2000)

"Couple en plein air", 1996
oil on canvas
100 x 81 cm

© Eugène Leroy
Courtesy: Daniel Blau Munich



Eugène Leroy (1910 - 2000)

"Homme Bleue", 1965
oil on canvas
148 x 115 cm

© Eugène Leroy
Courtesy: Daniel Blau Munich